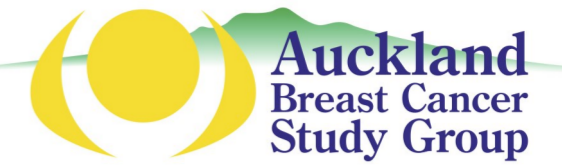


Auckland Breast Cancer Register—12 Year Data

A special project of the Auckland Breast Cancer Study Group

Vernon Harvey, Reena Ramsaroop, Paul Thompson, Alex Ng, Erica Whineray Kelly, Maria Pearse
Mark Barrios, Mina Christophers, Troydyn Raturaga



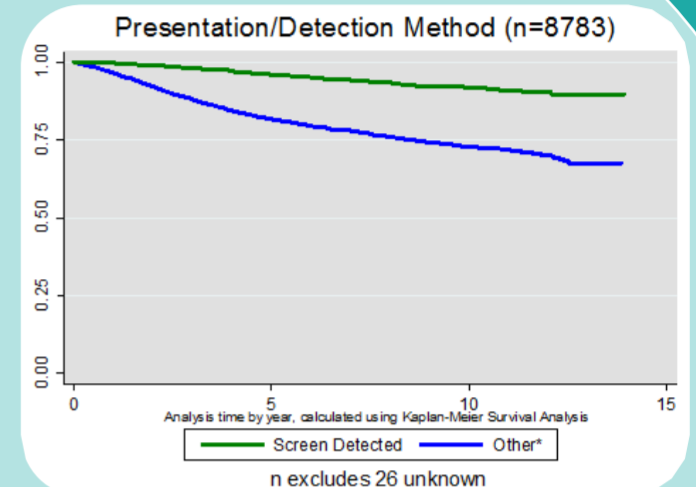
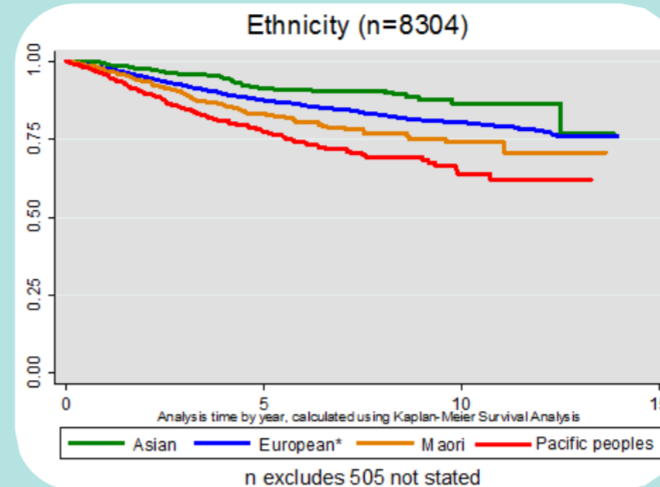
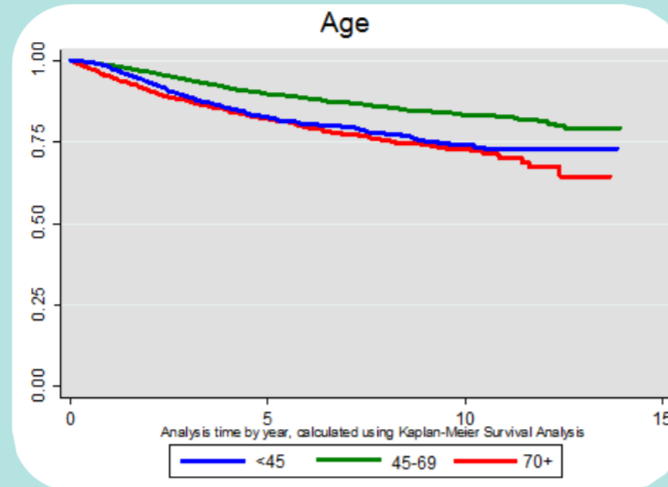
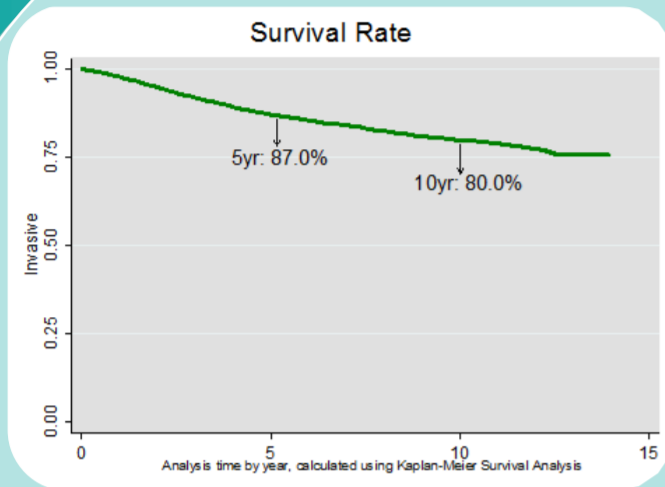
The Register was established against a background of important advances in all areas of breast cancer. Information about current practice plays a key role in supporting the multi-disciplinary teams necessary for modern, high quality, evidenced-based care. Between 1st June 2000 and 31st May 2012, a total of 10399 patients were diagnosed with breast cancer within the Auckland region. The data for 9013 invasive incidents, representing 8809 patients, is presented below.

*European includes 'Other Minority Ethnicities' e.g. Middle Eastern, Latin American, African

**Other includes lump, pain, skin change, nipple change, incidental finding and 37 unknown

Survival Data — Breast Cancer-Specific (by patient, invasive only, n=8809)

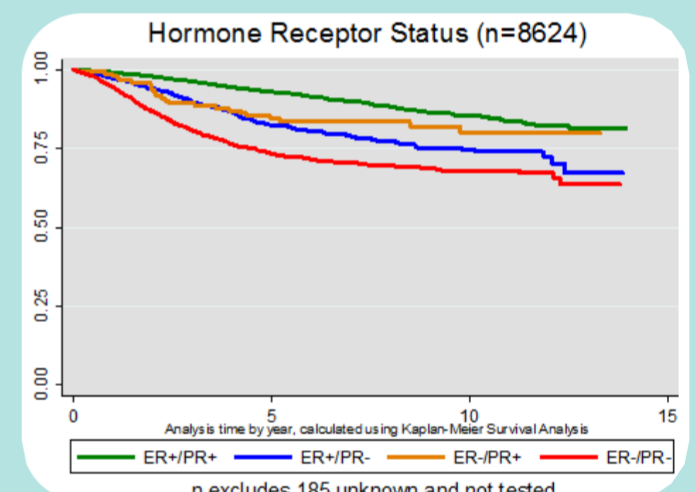
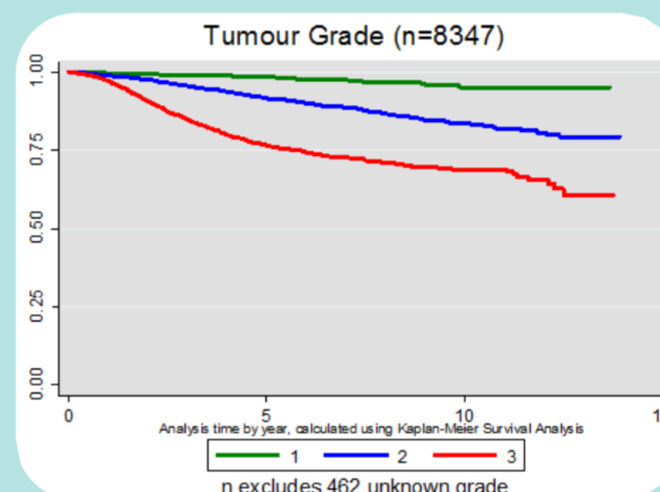
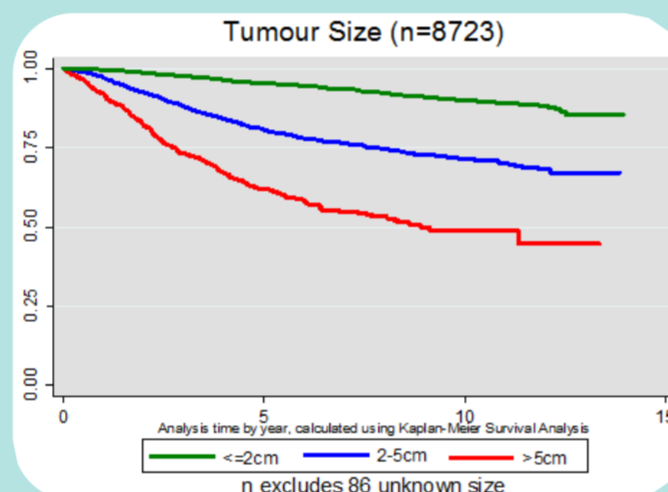
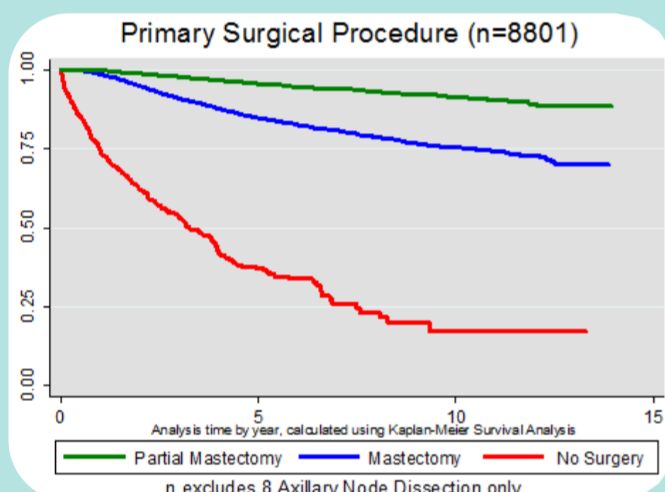
'Breast Cancer-Specific Survival Rate' includes breast cancer and unknown causes of death as events and the rest are non-events.



| Age Distribution | 5 Year (%) | 10 Year (%) |
|-----------------------|------------|-------------|
| <45 (n=1400, 15.9%) | 82.5 | 75.1 |
| 45-69 (n=5589, 63.4%) | 90.2 | 84.9 |
| 70+ (n=1820, 20.7%) | 84.6 | 75.6 |

| Ethnic Distribution | 5 Year (%) | 10 Year (%) |
|-------------------------------|------------|-------------|
| Asian (n=762, 9.2%) | 91.7 | 87.8 |
| European* (n=6204, 74.7%) | 88.3 | 81.9 |
| Māori (n=659, 7.9%) | 84.2 | 76.1 |
| Pacific peoples (n=679, 8.2%) | 78.1 | 67.6 |

| Presentation/Detection Method | 5 Year (%) | 10 Year (%) |
|---------------------------------|------------|-------------|
| Screen Detected (n=3364, 38.3%) | 96.1 | 92.2 |
| Other** (n=5419, 61.7%) | 82.8 | 75.2 |

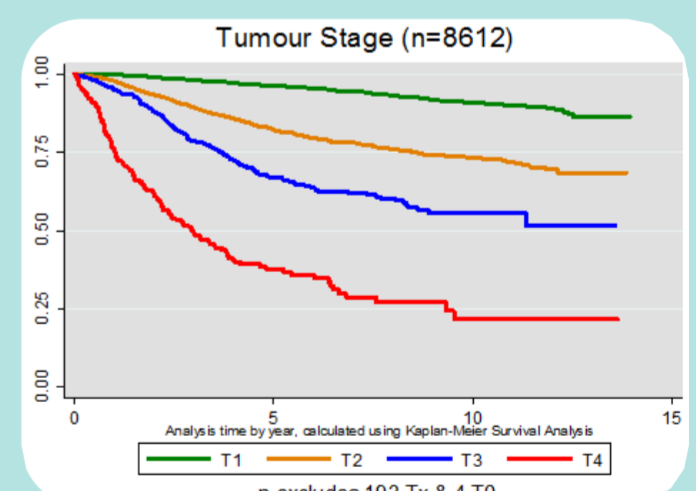
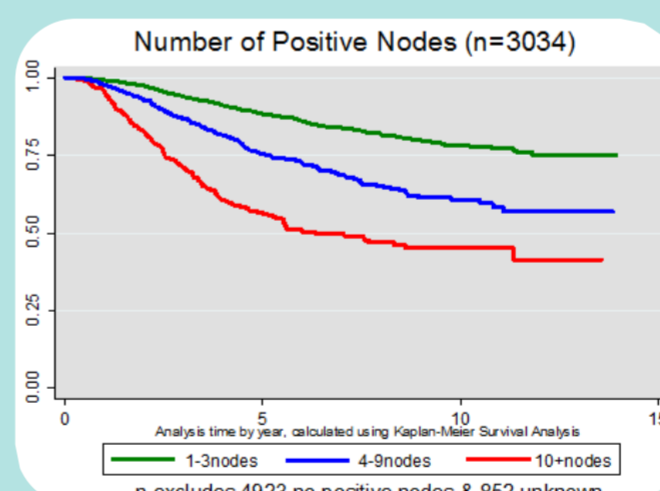
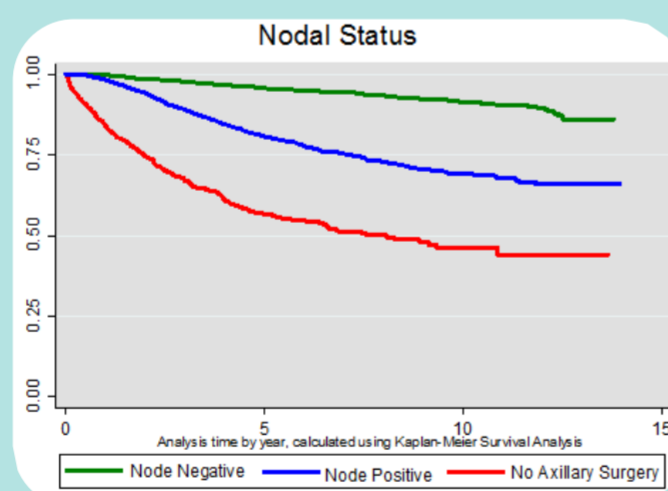
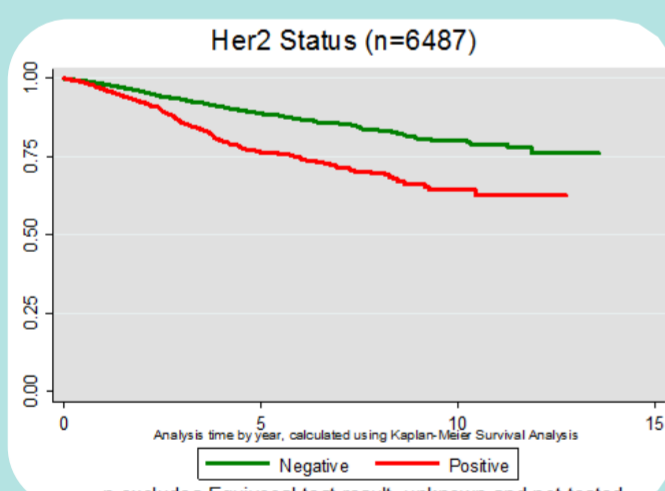


| Primary Surgical Procedure | 5 Year (%) | 10 Year (%) |
|--|------------|-------------|
| WLE/Partial Mastectomy (n=3752, 42.6%) | 95.6 | 91.7 |
| Mastectomy (n=4496, 51.1%) | 84.7 | 76.7 |
| No Surgery (n=553, 6.3%) | 44.8 | 25.4 |

| Tumour Size | 5 Year (%) | 10 Year (%) |
|-----------------------|------------|-------------|
| ≤2cm (n=4884, 56.0%) | 95.5 | 90.5 |
| 2-5cm (n=3158, 36.2%) | 81.4 | 74 |
| >5cm (n=681, 7.8%) | 63.8 | 53.6 |

| Tumour Grade | 5 Year (%) | 10 Year (%) |
|-------------------------|------------|-------------|
| Grade 1 (n=2023, 24.2%) | 98.4 | 95.7 |
| Grade 2 (n=3746, 44.9%) | 91.8 | 84.3 |
| Grade 3 (n=2578, 30.9%) | 77.5 | 71.2 |

| Hormone Receptor Status | 5 Year (%) | 10 Year (%) |
|---------------------------|------------|-------------|
| ER+ / PR+ (n=5556, 64.4%) | 93.2 | 86.3 |
| ER+ / PR- (n=1168, 13.5%) | 83.6 | 76.4 |
| ER- / PR+ (n=151, 1.8%) | 84.4 | 81.2 |
| ER- / PR- (n=1749, 20.3%) | 74.9 | 70.9 |

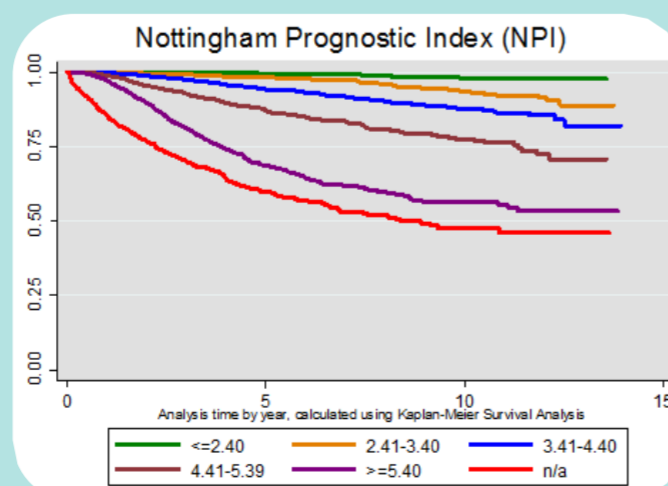


| Her2 Status | 5 Year (%) | 10 Year (%) |
|--------------------------|------------|-------------|
| Negative (n=5440, 83.9%) | 89.4 | 82.1 |
| Positive (n=1047, 16.1%) | 78 | 67.2 |

| Nodal Status | 5 Year (%) | 10 Year (%) |
|------------------------------------|------------|-------------|
| Node Negative (n=4897, 55.6%) | 95.6 | 91.8 |
| Node Positive (n=3022, 34.3%) | 80.8 | 70.9 |
| No Axillary Surgery (n=890, 10.1%) | 63.6 | 54.4 |

| Number of Positive Nodes | 5 Year (%) | 10 Year (%) |
|--------------------------|------------|-------------|
| 1-3 (n=1886, 62.2%) | 88.2 | 79.5 |
| 4-9 (n=698, 23.0%) | 75.6 | 62.4 |
| 10+ (n=450, 14.8%) | 56.7 | 47.8 |

| Tumour Stage | 5 Year (%) | 10 Year (%) |
|--------------------|------------|-------------|
| T1 (n=4473, 55.4%) | 96.3 | 91.2 |
| T2 (n=2980, 34.6%) | 82.7 | 75.2 |
| T3 (n=627, 7.3%) | 68.5 | 59.3 |
| T4 (n=232, 2.7%) | 41.5 | 26.6 |



| Nottingham Prognostic Index | 5 Year (%) | 10 Year (%) |
|---|------------|-------------|
| ≤2.40, excellent prognosis (n=1308, 14.8%) | 99.5 | 98 |
| 2.41-3.40, good prognosis (n=1895, 21.5%) | 98 | 93.5 |
| 3.41-4.40, moderate prognosis group 1 (n=1787, 20.3%) | 94.1 | 88.2 |
| 4.41-5.39, moderate prognosis group 2 (n=1344, 15.3%) | 86.8 | 78.5 |
| ≥5.4, poor prognosis (n=1500, 17.0%) | 69.1 | 59 |
| n/a (n=975, 11.1%) | 65.8 | 55.3 |