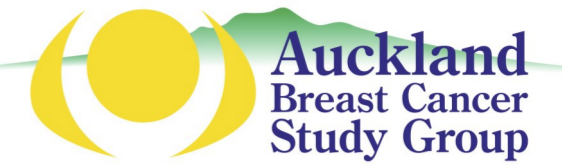


Auckland Breast Cancer Register—12 Year Data

A special project of the Auckland Breast Cancer Study Group

Vernon Harvey, Reena Ramsaroop, Paul Thompson, Alex Ng, Erica Whineray Kelly, Maria Pearse
Mark Barrios, Mina Christophers, Troydyn Raturaga

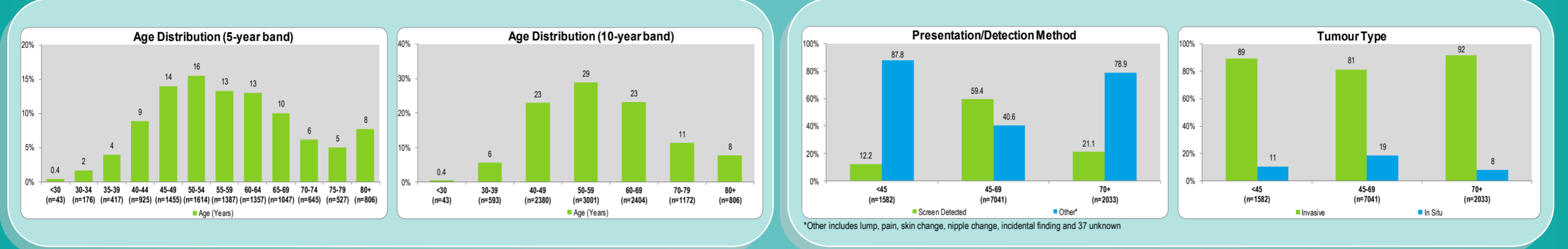


The Register was established against a background of important advances in all areas of breast cancer. Information about current practice plays a key role in supporting the multi-disciplinary teams necessary for modern, high quality, evidenced-based care. Between 1st June 2000 and 31st May 2012, a total of 10399 patients were diagnosed with breast cancer within the Auckland region. The data for these patients, representing 10656 incidents of breast cancer (85% Invasive, n=9013 / 15% In Situ, n=1643) is presented below.

Age Data

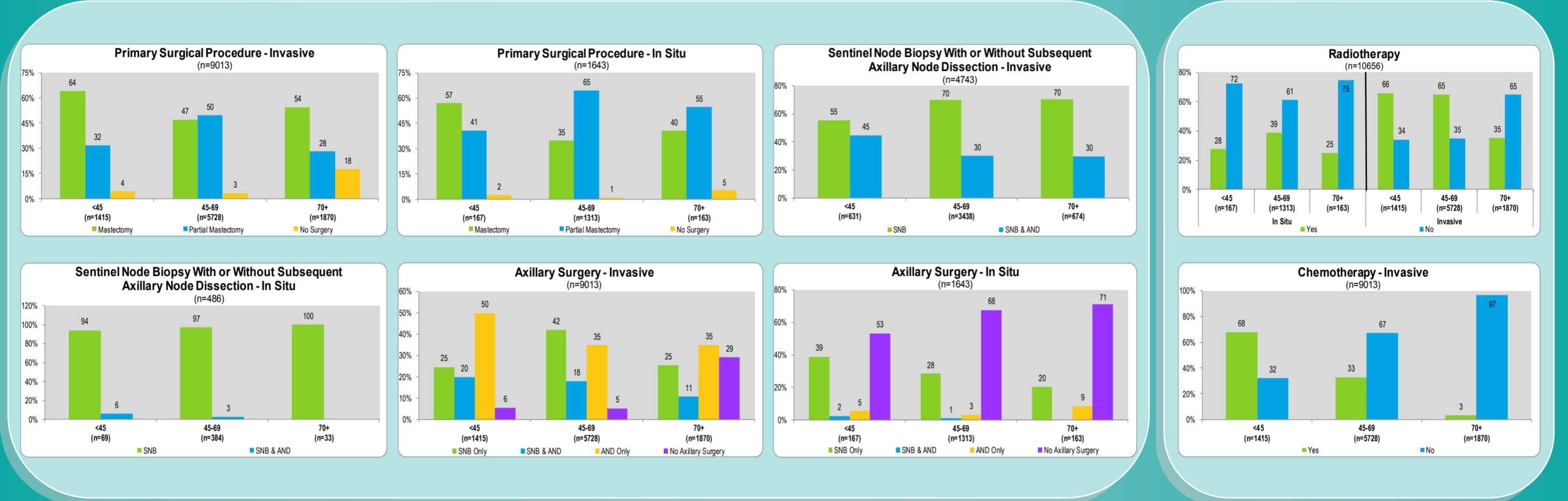
Demographics (by patient, n=10399)

Diagnosis (by incident, n=10656)

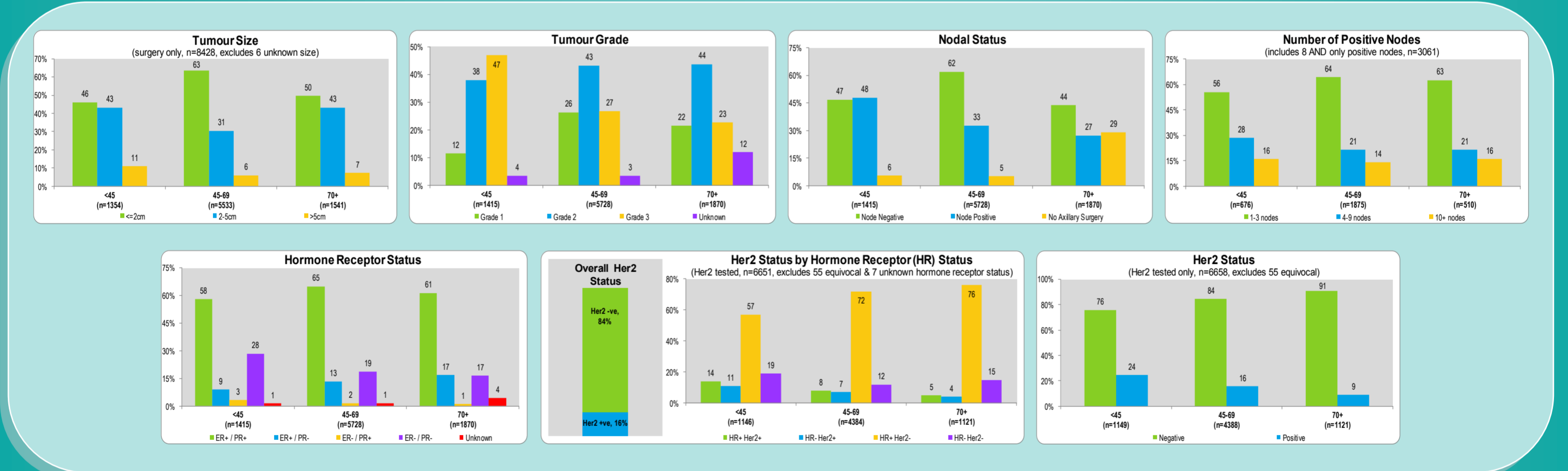


Treatment/Surgery (by incident)

Treatment/Oncology (by incident)

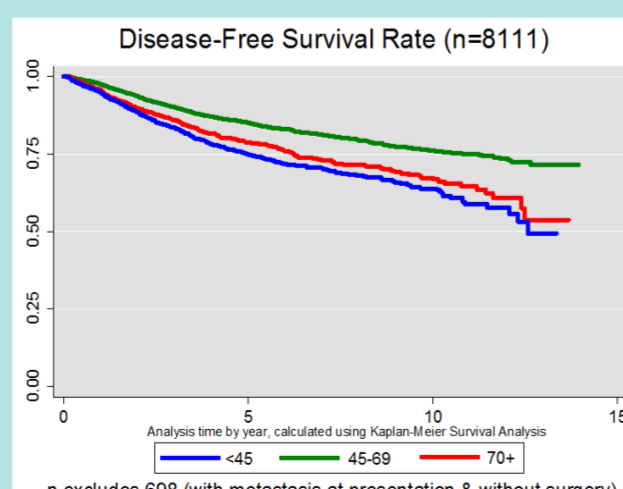
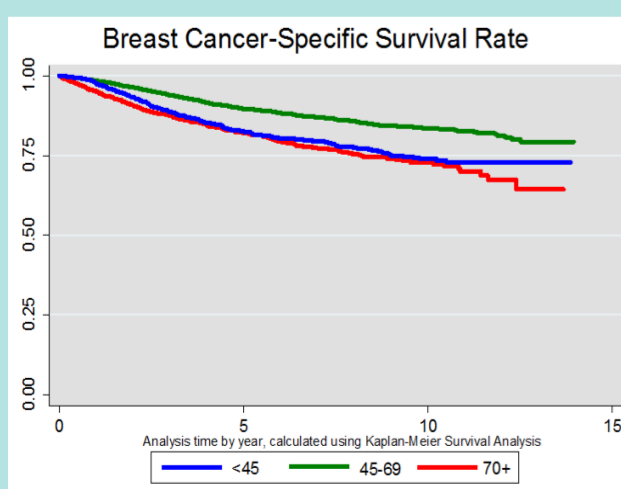


Prognostic Indicators (by incident, invasive only, n=9013)



Survival Data (by patient, invasive only, n=8809)

Mortality Data (by patient)



Age Distribution	5 Year (%)	10 Year (%)
<45 (n=1400, 15.9%)	82.5	75.1
45-69 (n=5589, 63.4%)	90.2	84.9
70+ (n=1820, 20.7%)	84.6	75.6

Age Distribution	5 Year (%)	10 Year (%)
<45 (n=1311, 16.2%)	76.3	65.1
45-69 (n=5330, 65.7%)	85.4	77.8
70+ (n=1470, 18.1%)	80.6	69.4

*'Breast Cancer-Specific Survival Rate' includes breast cancer and unknown causes of death as events and the rest are non-events.

*'Disease-Free Survival Rate' includes all disease progression and breast cancer and unknown causes of death without prior history of progression as events and the rest are non-events.

Overall Mortality by Primary Cause		
Age Distribution	Breast Cancer	Other Causes
<45	254	22
45-69	594	254
70+	307	542
Total	1155	818

Data to date for demographics, diagnosis, treatment, prognostic indicators, survival and mortality are mostly consistent with national and international reports.

The Auckland Breast Cancer Study Group gratefully acknowledges:
the funding of the Register by The New Zealand Breast Cancer Foundation
the administrative support of Auckland District Health Board
and the valuable contribution of Valerie Pennick to this poster.

